

DRIVING AT WORK / COMMUNITY ENGAGEMENT

Welcome to the fifth issue of the Hercules Site Services Ltd Safety, Health, Environment & Quality (SHEQ) eBulletin. Each issue will have a central theme which is relevant to us all in the construction industry.

Driving at Work

Vehicles at work continue to be a major cause of fatal and major injuries. Every year there are over 5000 incidents involving transport in the workplace. About 50 of these result in people being killed. Estimates suggest that up to one-third of all road traffic accidents involve someone who is at work at the time.



There were **1,748** reported road deaths in 2019

There were **25,975** serious injuries in road traffic accidents reported to the police in 2019

There was a total of **153,315** casualties of all severities in reported road traffic accidents in 2019

To manage the risks from workplace transport effectively, we need to consider **three key areas** -

Safe site:

Every workplace must be safe for the people and vehicles using it and traffic routes must be suitable for the people and vehicles using them.

Safe vehicle:

Does the driver have good all-round visibility?
What warning systems (such as horns and lights) are fitted?
Are the seat belts and restraints safe and comfortable and do they meet the needs of the job?



What safeguards will prevent people from coming into contact with dangerous parts of the vehicle such as power take-offs, chain drives, exposed hot exhaust pipes?
Can drivers get in and out of the cab safely and easily?
What protection is there from bad weather, extremes of temperature, dirt, dust and fumes?

Is there a way to prevent injury if the vehicle overturns? For example, roll protection, operator restraints or falling object protection?

Is there a way to prevent the vehicle from moving? For example, by applying brakes and removing the keys?

Is the vehicle bright enough to be seen?

Do the vehicle lights provide enough light for the driver to work?

The design of vehicles used on public roads has to meet specific legal standards, set out in the Road Vehicles (Construction and Use) Regulations. The overall standard of vehicles used in workplaces should be at least as good as for public roads.

Safe driver:

How are the workplace routes laid out?

Who is authorised to drive, and where?

How and where should the worker report faults or hazards?

How should they report accidents and near misses?

What daily, weekly and monthly checks should they make?

What particular risks are there in your workplace?

What can they do to reduce or eliminate these risks?

Do drivers and operators need personal protective equipment, such as high-visibility clothing, head protection, driver restraints, safety boots and equipment to prevent falls?
If English is not their first language, how will you make sure they understand the instructions you give them?

Accreditation & Training

We are in the process of gaining Fleet Operator Recognition Scheme (FORS) accreditation, which can only be good for us all when it comes to safety.



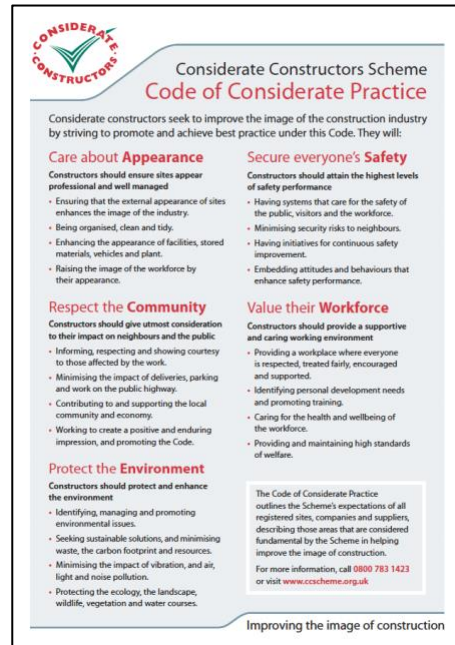
Another new addition to the training suite is an LGV eLearning training module which our strategic partner Balfour Beatty have developed and shared with their supply chain.

Community Engagement / Managing Conflict

As an industry we don't work in isolation, we are at the centre of creating the communities in which we all live. This is a big opportunity, and a responsibility for us all. The design, build and operation of the built environment all have the potential to be extremely disruptive to neighbours. Effective engagement and consultation with communities can be used to mitigate this risk, as can use of initiatives such as the Considerate Constructors Scheme. Clients, local authorities and other stakeholders increasingly expect companies in the built environment to engage with the wider community and enhance them. They are using their procurement processes and instruments such as planning conditions to drive improved community engagement.



Many companies working in the built environment engage with voluntary and community organisations. This can be done through charitable or payroll giving, sponsorship, pro-bono or in kind work and enabling employees to spend time volunteering in community or charity projects. There is much we can do, but we need to also consider the impact our activities have, it is no longer good enough to just turn up and give time and money; we need to be able to quantify the benefits that our interactions with the community are having.



Managing Conflict - Rules

1. Do's

- Stay calm yourself
- Keep space between yourself and the other person
- Try not to use words that could escalate the situation
- Try to de-personalise the situation
- Stay safe
- Know how to contact Police should it be required

2. Don't's

- Avoid getting angry yourself
- Make jokes about the situation

- Use words that may inflame the situation
- Don't be patronising by using words like 'mate & love'
- Say there is nothing you can do about it
- Try and have the last word

Remember its not personal to you, that person is angry about a situation.

Help and resources -

<https://www.gov.uk/coronavirus>

<https://111.nhs.uk/covid-19/>

<https://www.constructionindustryhelpline.com/our-app.html>



<https://www.mentalhealthatwork.org.uk>

<https://www.mind.org.uk>

Employee Assistance Programme

- 0800 0474097

Hercules Dedicated Support Line



- 01793 686223