

TOGETHER WITH OUR CLIENTS AND WORKFORCE - ONE VISION, ONE TEAM, ONE SOLUTION

ENVIRONMENT

Welcome to the delayed fourth issue of the new Hercules Site Services Ltd Safety, Health, Environment & Quality (SHEQ) eBulletin. Each issue will have a central theme which is relevant to us all in the construction industry.

Environment

Definition: *environment noun (NATURE) [U] earth science, the air, water and land in or on which people, animals and plants live: We're trying to protect the environment from pollution.*



The five global risks of the coming years that are highest in terms of their likelihood are all **environmental**

- Extreme weather events with great damage to property, infrastructure and human life.
- Governments and businesses fail to mitigate and adapt to climate change.
- Man-made environmental damages and disasters.
- Great loss of biodiversity and collapse of ecosystems with irreversible consequences for

the environment, which leads to a severe depletion of resources for humanity and industry.

- Major natural disasters such as earthquakes, tsunamis, volcanic eruptions and geomagnetic storms.

(The Global Risk Report 2020 of the World Economic Forum)

Carbon Footprint

Today, the term “Carbon Footprint” is often used as shorthand for the amount of carbon (usually in tonnes) being emitted by an activity or organisation. The Carbon Footprint is also an important component of the Ecological Footprint, since it is one competing demand for biologically productive space. Carbon emissions from burning fossil fuel accumulate in the atmosphere if there is not enough biocapacity dedicated to absorbing these emissions. Therefore, when the carbon footprint is reported within the context of the total Ecological Footprint, the tonnes of carbon dioxide emissions are expressed as the amount of productive land area required to segregate those carbon dioxide emissions. This tells us how much biocapacity is necessary to neutralize the emissions from burning fossil fuels. Measuring the Carbon Footprint in land area does not imply that carbon sequestration is the sole solution to the carbon dilemma. It just shows how much biocapacity is needed to take care of our untreated carbon waste and avoid a carbon build-up in the atmosphere.



Measuring it in this way enables us to address the climate change challenge in a holistic way that does not simply shift the burden from one natural system to another. In fact, the climate problem emerges because the planet does not have enough biocapacity to neutralize all the carbon dioxide from fossil fuel and provide for all other demands. The carbon Footprint is currently 60 percent of humanity’s overall Ecological Footprint and its most rapidly growing component. Humanity’s carbon Footprint has increased 11-fold since 1961. Reducing humanity’s Carbon Footprint is the most essential step we can take to end overshoot and live within the means of our planet.

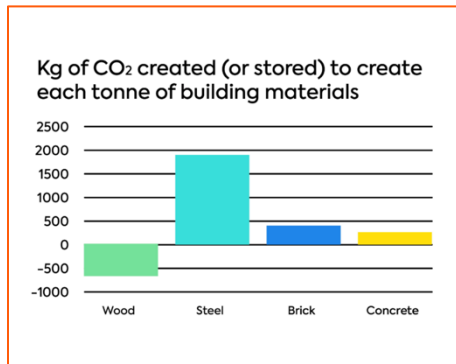


Embodied carbon – the emissions associated with building material manufacturing and construction.

The whole life (**Operational**) carbon of the building is both the embodied carbon and the carbon associated with operation (heating, cooling, powering, providing water etc)

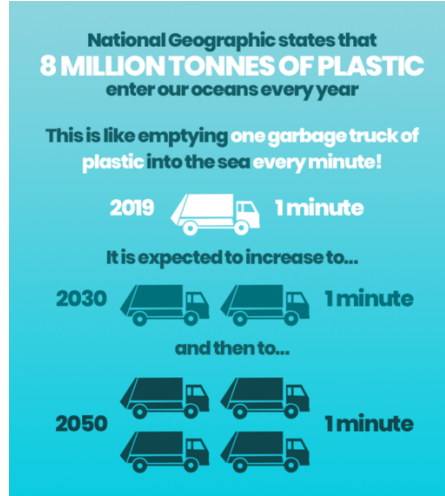
Carbon Management Plan

As a company we hold ISO 14001 accreditation which shows our commitment to our environmental responsibilities and is the format of our Environmental Management System (EMS) which is where you will also find our Policies and Procedures. We have recently produced, after a lot of hard work our Carbon Management Plan which will be our guide moving forward in our ultimate goal of reducing and minimising our carbon footprint as a company.



Changes You Can Make At Home To Help Save The Planet

1. Switch to reusable cups and bags, ditch single-use plastic when you're out and about by getting organic cotton shopping bags, reusable water bottles, and a reusable coffee cup or flask.
2. Help local wildlife thrive, gardens, allotments and community gardens all play a huge role in helping wildlife thrive, especially in urban areas.



3. Eat local produce to minimise the impact of any diet, experts say you should consider buying as much as you can from local suppliers - this helps reduce air miles and also gives a boost to small businesses. Why not head out to a local farmers' market and see what goodies you can find?

4. Food waste is an unnecessary modern-day scourge - the energy and resources that have gone into growing, cooking or packaging food are wasted if that food ends up in the bin. If you're unsure what to do with those leftovers, head to the charity [Love Food Hate Waste online](http://www.lovefoodhatewaste.org). It has a number of recipes which can be adapted to suit what's in your fridge.

5. Eat Less Meat and Dairy, even if you don't want to give up meat and dairy altogether, reducing the amount you eat can help. In October 2018, scientists warned that if we keep up with our current levels of meat consumption, it will greatly affect the Earth's environment, because of the 5.2 billion tonnes of carbon dioxide, methane and nitrous oxide associated with the industry. Reducing the amount to one meal a day, or once a week could make a difference !

6. Recycle, much of the waste in the kitchen and around the home can be cleaned and dropped straight into the recycling bin - but when it comes to the bathroom, 4 in 10 admit they

don't recycle items in there. Hang a bag on the bathroom door or get a recycling bin for your empty shampoo bottles to help reduce your impact.

7. Stop Wasting Water, there are plenty of water-saving devices you can get for free from your water provider. These include 'save a flush' toilet devices, which reduce the amount of water flushed away and could save 5,000 litres of water; tap aerators, which save water by mixing it with air; and a four-minute water timer, designed to cut the time you spend in the shower.

Help and resources -

<http://www.field.org.uk/the-top-15-useful-environmental-websites-in-the-uk/>

<https://www.gov.uk/coronavirus>

<https://111.nhs.uk/covid-19/>

<https://www.constructionindustryhelpline.com/our-app.html>



<https://www.mentalhealththatwork.org.uk>

<https://www.mind.org.uk>

Hercules Dedicated Support Line



• 01793 686223

Employee Assistance Programme

• 0800 0474097